

Newsletter

w/c 26th September 2022—No 3



Mon

- UU Swimming 1 pm—Volunteer LW
- Stay & Play Club 3-4 pm
- Gym Club 3-4 pm
- Friends Meeting 7 pm—Hall

Tues

- YR & Y1—Woodland Work

Weds

- Lunches w/c 03/10 order by 12 am

Thurs

- MU bring small boxes to set alight as per letter sent home
- Art Club 3-4 pm
- Cookery Club 3-4 pm—£12 cash
- LU Phonics meeting 3 pm

Fri

- Radio Club - Y4—Booster seats?
- MU Cooking—apron, container, ingredients NH, EH, BP, SB

Sat

- Grounds Clear Up—10-12pm (adults only please)

Punctuality

Please could we remind everyone that school starts promptly at **8.45 am** and children go straight into phonics lessons. We have seen a increase in children arriving after this time. Entering lessons late is disruptive for the rest of the class and uncomfortable for your child and affects everyone's learning time. We have a late register which parents should complete when children arrive after 8.45 am.

Lunches

Parents have until Wednesday midnight to order lunches for the following week, this is the same for cancelling lunches or changing lunches already ordered—Wednesday midnight. If your child is unexpectedly absent—please email me, letting me know if they have a hot lunch booked and I will cancel it for you if you tell me before 9 am and recredit your account.

Reception Parents

From next week—w/c 26/9—please can parents say goodbye to children at the metal playground gate and then wait on the pavement along with other parents. Children should not come into school grounds until the teacher is present at 8.35 am. Children can walk into the playground by themselves and then they can walk up the steps onto the decking and into the classroom.

Friends

There will be a Friends Meeting at 7 pm in the school hall on Monday 26th September. All are welcome. This would be a great opportunity for our new parents to find out more about the PTA and what they do and how they raise funds for the school. Following the meeting at 7.30 pm the Friends Annual General Meeting will take place. If you would like to come at 7.00 pm to meet the PTA, but not stay for the full AGM, please do.

Radio Club 30/9

Radio Club is not based in Tibberton again this week and your child will need to remember their booster seats **if** they need one. Named please. Left in the foyer. Children are TR EP MF OR.

Please support the school by parking considerately at the start and end of the school day. This keeps our children safe and alleviates pressure at busy times. More below. This week Radio Club have enjoyed a visit to Fernhill Heath Care Home to speak to the residents and do some lovely healthy activities—tasting smoothies, making fruit kebabs and testing out some healthy food platters! The theme this term is healthy eating, cooking from scratch, making healthy choices and not eating too many ultra-processed foods. We have recorded the residents' views on what they ate when they were young, what they think of all the choices around these days, and their thoughts on cooking & children learning to cook. Upper Unit loved their trip to the Corinium Museum and found out lots of fabulous Roman facts. We would love as many adult volunteers for our upcoming grounds tidy session. Have a great weekend,
Mr Gromski.

**Attend-
ance**

LU

MU

UU

w/c

19/09/22

94.57%

98.81%

96.00%

Parking

Please can we remind all parents/carers not to park outside school on or opposite the zig zag markings. The safest place for you to park are the local pub car-parks. This frees up the roads for traffic to flow freely and for residents to enter and exit the village. Please remember at this time residents may be trying to get out of the village to pick up their own children from Middle & High School. Parking on the roads blocks the flow of traffic. Please be mindful of the Highway Code and safety of everyone.

October 1st—Grounds Clean Up

On Saturday 1/10 between 10 am and 12 pm we are asking if any adults have a couple of hours spare to help us with some jobs around the school grounds. Please see the attached poster for details. Please email Miss Breakell at lu@tibberton.worcs.sch.uk if you think you can help out—refreshments will be provided (she makes a great cuppa!). All help greatly appreciated.

Harvest Donations

Thursday 6th October is our Harvest festival in school. We will be collecting donations from Monday 3rd October. Please bring fresh donations on Thursday 6th only. The donations will be taken to Tibberton Church for the service on Sunday 9th October. They will then be taken to Droitwich Spa Food Bank.

LU Phonics Meeting 29/9

Reception parents (and any Y1 parents that would like a refresher) are invited to a phonics meeting after school 3-3.30 pm in LU classroom. Children will be looked after in the playground by a teacher.



This week a new family joined our school! The Tibb Family will be helping our children learn about different aspects and periods of history in many creative ways. But first, we have asked our children to vote on what they would like the 3 Tibb children to be called. Your child will be bringing a voting slip home - please help them to complete it and return to school by Friday 23rd September.

Many thanks, Miss Sabine.

Stay & Play	Y 1,2	Monday (Tuesday 20/9) 3-4 pm	20/9, 26/9, 3/10, 10/10, 17/10, 31/10, 7/11	Miss Breakell	7 sessions £0
Gym	Y 3,4	Monday 3-4 pm	26/9, 3/10, 10/10, 17/10	Mrs Turner	5 sessions £0
Art	Y3,4	Thursday 3-4 pm (Wed after half term)	22/9, 29/9, 6/10, 13/10, 2/11, 9/11, 16/11, 23/11	Ms Sabine	8 sessions £0
Cookery	Y 3,4	Thursday	22/9, 29/9, 6/10, 13/10	Mrs Jordan	4 sessions £12

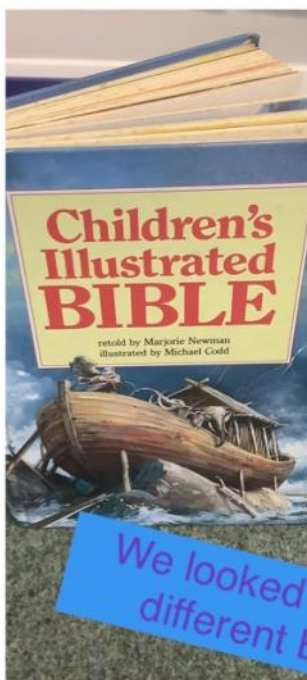
Dates for the Diary (updates in red)

- Monday 26th September—7—7.30 pm—School Hall—Friends PTA Meeting
- Monday 26th September—7.30 pm—Friends AGM
- Thursday 29th September—3-3.30pm Reception Parents Phonics Meeting—LU Classroom
- Friday 30th September—Y4 Radio Club out - Booster seats?
- Saturday 1st October—10 am—12 pm—Grounds Clear Up 10am -12pm
- Monday 3rd October—LU visit Tibberton Church
- **Monday 3rd October—No perishable Harvest Festival donations**
- Thursday 6th October—Tibberton Harvest Festival—School Hall 9-9.30 am—All Welcome
- **Thursday 6th October—perishable Harvest Festival donations**
- Friday 7th October—UU to RGS—details TBC
- Sunday 9th October—Harvest Festival Service Tibberton Church 10.30 am—All Welcome
- Wednesday 12th October—Tibberton Open Morning—9.30—10.30 am
- Wednesday 19th October—Parents Evening 2-4 pm—details TBC
- Thursday 20th October—Individual Portrait School Photos—pre school siblings welcome at 8.30 am
- Thursday 20th October—Parents Evening 3-7.30 pm—details TBC
- Friday 21st October—Break Up for Half term
- Monday 31st October—Children return to school at 8.45 am
- Monday 31st October—deadline for submission of secondary & high school applications for September 2023
- Friday 25th November—Y1-Y4 Cluster Carols—details TBC
- Monday 28th November—Extra UU Swimming session due to school closure 19/9
- Thursday 1st December—Tibberton Christmas Bazaar—details TBC
- Wednesday 7th December—Whole School Nasal Flu Vaccine—details TBC
- Tuesday 13th December—Christmas Concert 1.30 & 5.30 pm—details TBC
- Thursday 15th December—Breakfast with Santa, Party Day & Christmas Disco—details TBC
- Friday 16th December—Christmas Jumper day & Gifts for Loved Ones—details TBC
- Friday 16th December—Break Up for Christmas
- Tuesday 3rd January—Inset Day—Children not in school
- Wednesday 4th January—Children return to school 8.45 am
- Sunday 15th January—deadline for submission of primary, middle, first school applications for September 2023
- Friday 17th February—Break Up for half term
- Monday 27th February—Children return to school 8.45 am
- Thursday 2nd March—World Book Day
- Tuesday 28th March—Easter service- Tibberton Church 8.45 am—details TBC
- Friday 31st March—Break Up for Easter
- Monday 17th April—Children return to school 8.45 am
- 3rd/4th/5th May—Y4 Residential—details TBC
- Thursday 4th May—Y3 Outward Bounds Activity Day details TBC
- Friday 12th May—Y4 Bikeability 1pm details TBC
- Friday 26th May—Break Up for half term
- Monday June 5th—Inset Day
- Tuesday 6th June—Children return to school 8.45 am
- Thursday 15th June—New Reception 2023 Parents Info meeting
- Friday 16th June—UU 3 Counties Show—TBC
- Thursday 22nd June—1.10pm—2.45 pm—New Reception 2023 Children Induction Session 1 of 2
- Thursday 29th June—Sport Day—1.15 pm
- Saturday 1st July—Tibberton School Summer Fete 2-5 pm
- Monday 1st July—New Reception 2023 Children Induction Session 2 of 2
- Thursday 6th July—reserve Sports Day—1.15 pm
- Thursday 20th July—Leavers service 9 am
- Friday 21st July—Break up for summer



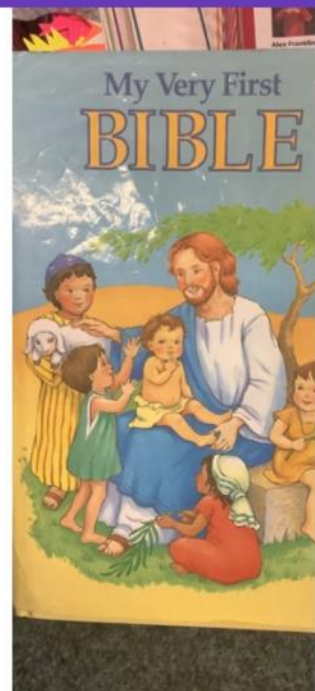
Congratulations
to all
our children
who received
awards
this week





The Calming of the Waves

We looked at lots of different Bibles.



In RE we used props to act out the story.



We created our own representations of the story.



This week MU have been finding out about bulbs and seeds and have been planting their own.



They have also been painting scenes from the Bible's Creation story in RE.





Week 3 UU visited Corinium Museum to learn about the Romans!



PIC•COLLAGE

Calling all go-getters.

Ready to try something new?

scouts.org.uk/join

#SkillsForLife

Want to learn new skills and make new friends? Why not come along to our free Beavers taster session at Scouts 1st Crowle

Who

All young people aged 6 to 8 years old with their parent/s or carer/s and adults interested in volunteering

When

Tuesday 27th September 6.00pm to 7.00pm

What

Open evening of Beavers activities for girls and boys

Where

Crowle Parish Hall, Church Rd, Crowle, Worcester WR7 4AZ

Contact

Julie at heretohelp@scoutshw.org.uk or call 07774 667074 to find out more




Scouts
1st Crowle

Copyright 2018 The Scout Association Registered Charity numbers 306101/SC038437



Volunteers needed!

Grounds tidy up morning (adults only please)

Saturday 1st October from 10am until 12pm

Could you spare our school a few hours of your time?

We have beautiful school grounds which we all enjoy every day but they need a good tidy up! We would love it if you could come and help us with a few jobs...

What needs doing?

Sweeping

Weeding

Pruning

A good general tidy for our outside area!

What you could bring to help?

Brooms

Pruning clippers

Gloves

(Anything else you think would be helpful!)

If you are able to spare some time, please could you send Miss Breakell an email, so we have some idea of numbers. lu@tibberton.worce.sch.uk

Tea/coffee and refreshments provided!

Thank you

The School Council



Tibberton CE First School

Plough Road, Tibberton WR9 7NL



Open Day

Wednesday 12th October 2022

**Prompt 9.30am start - 10:30am
with a speech from the Head**

A caring church school with a family feel where children love to learn.

- High academic achievement
- Excellent behaviour
- Christian Ethos
- Age: 4-9 years



**Contact the school on
01905 345284**

Email: office@tibberton.worcs.sch.uk

Visit our website <http://www.tibberton.worcs.sch.uk/>

Outstanding in all areas – Ofsted 2014

"Standards are significantly above those usually found in reading, writing and mathematics."

"Staff are exceptionally caring and create an exceptional place for learning."

"The behaviour of pupils is outstanding."

"Pupils demonstrate great enthusiasm for learning."



You need to apply for a school place by 15th January 2023.

For more information and to apply, visit:

www.worcestershire.gov.uk/schooladmissions

Westacre Middle School



Inspire • Challenge • Achieve

Y5 Open Morning & Evening
Thursday 29th September
10.15 am to 11.45 am
5.00 pm to 7.15 pm
Tel 01905 772795

You need to apply for a school place by 15th January 2023.
For more information and to apply, visit:
www.worcestershire.gov.uk/schooladmissions

Part Of The Pinvin Federation of Schools

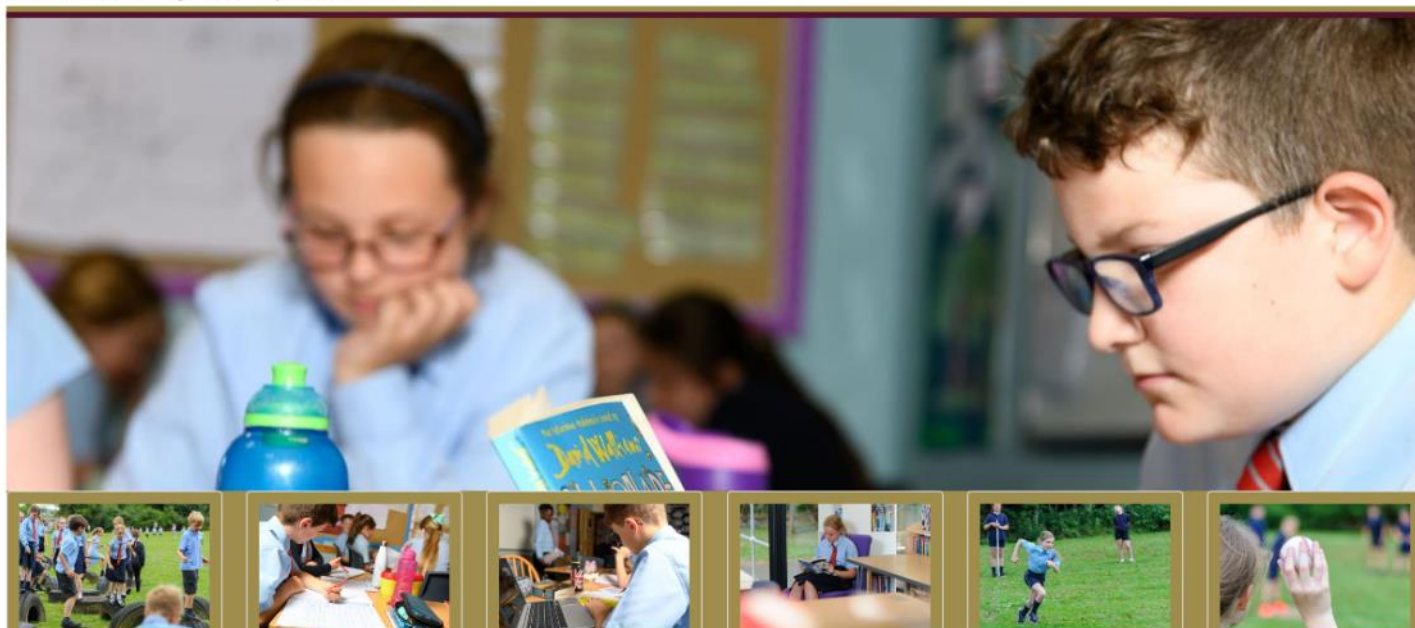


Telephone: 01386 554196
E-mail: office@pinvinfed.co.uk



[HOME](#) [OUR SCHOOL](#) [ESSENTIAL](#) [STATUTORY](#) [INFORMATION FOR PARENTS](#) [CONTACT US](#)

ool on Tuesday 6th September 2022!



Y5 Open Morning & Evening
Wednesday 28th September
6.00 pm to 7.00 pm
Thursday 13th October
4.30 pm to 5.30 pm
Tel 01386 554196

You need to apply for a school place by 15th January 2023.
For more information and to apply, visit:
www.worcestershire.gov.uk/schooladmissions



Pershire High School



Part of the
Avonreach Academy Trust

About Us

Key Information

Curriculum

Parents

Students

Sixth Form

Facilities & Community

Contact Us



Y7/8 Open Evening
Thursday 29th September
6.00 pm to 9.00 pm
Tel 01386 552471

You need to apply for a school place by **31st October 2023**

For more information and to apply, visit:

www.worcestershire.gov.uk/schooladmissions

STARTING SCHOOL IN SEPTEMBER 2023

- If you live in Worcestershire
and
- Your child was born between 1st September 2018
and 31st August 2019

You need to apply for a school place by 15th January 2023.
For more information and to apply, visit:
www.worcestershire.gov.uk/schooladmissions



Visit your local library to use a computer and apply for free. Or call the Worcestershire Hub on 01905 822 700.

Find out more online:
www.worcestershire.gov.uk/schooladmissions

WORCESTERSHIRE
CHILDREN FIRST

