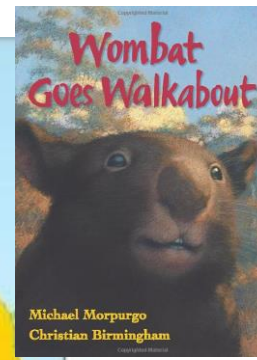
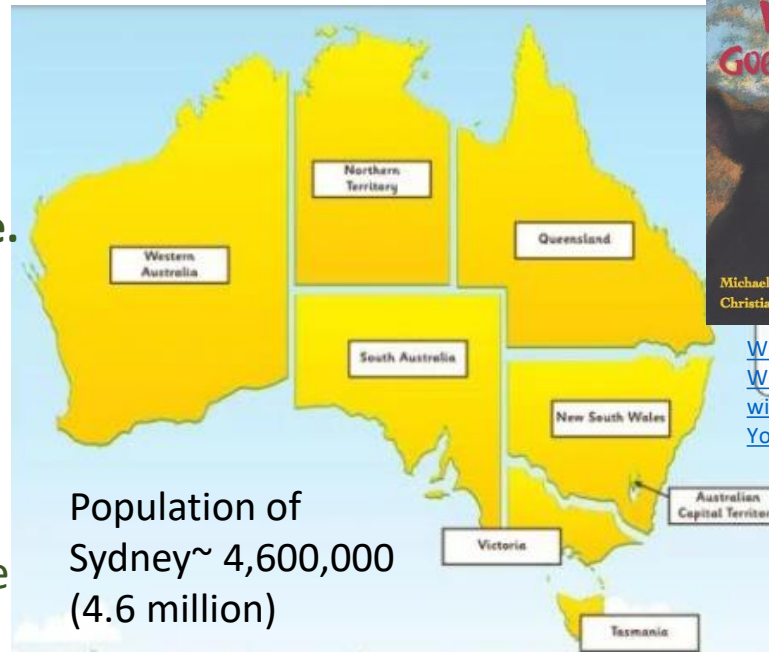
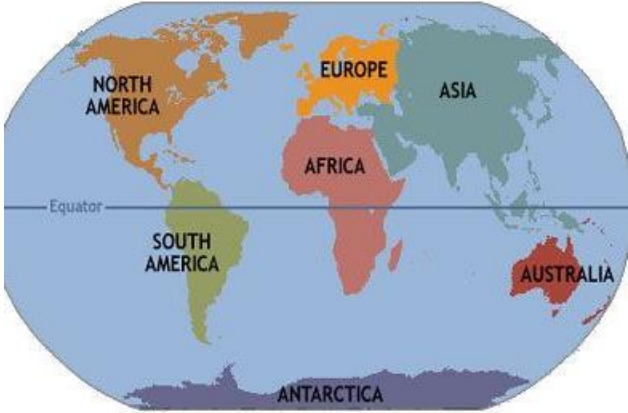


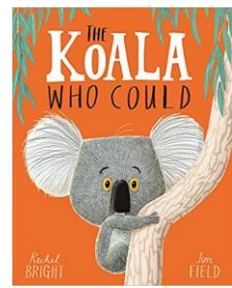
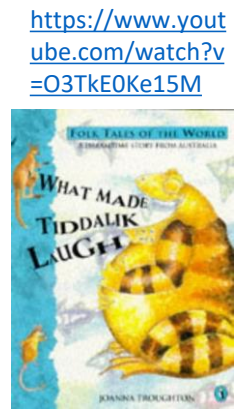
Amazing Australia



Australia is in the **Southern Hemisphere**. It is a huge continent with tropical rainforests in the north, dry and hot deserts in the centre and a more temperate climate in the south east.



[Wombat Goes Walkabout - Reading with Miss Vella - YouTube](#)



[The Koala Who Could - YouTube](#)

<https://www.youtube.com/watch?v=O3TkEOKe15M>

Key Questions

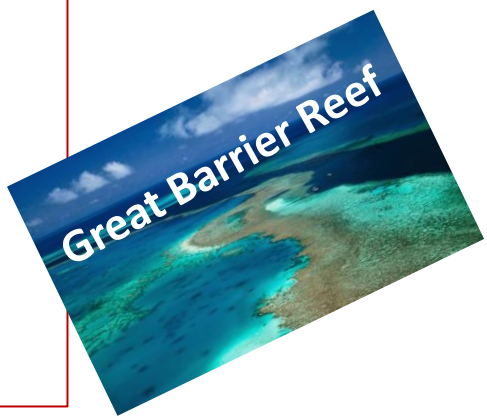
- Where is Australia in the world and what is its climate?
- What are the different regions and landmarks of Australia?
- How is Australia similar/different to the UK?
- Who are the Aboriginal people and what are their traditions and beliefs?
- Who was Barbara Weir and what did she do?



Uluru



Sydney Opera House



Great Barrier Reef

Capital City = Canberra
Largest City = Sydney

Key vocabulary	
Continent	A massive area of land that is separated from others by water or other natural features.
Europe	The continent that we live in.
Australasia	The continent that Australia is in.
Sydney	A large city in Australia.
City	A large town
Town	A built up area where people live and work.
Pacific Ocean	The largest and deepest ocean lying between Asia and Australia.
Southern Hemisphere	The part of the earth that lies south of the equator.
River	A large, natural stream of fresh water that flows into the sea or a lake.
Physical features	Natural features of land
Human features	Features of land that have been impacted by human activity
population	The number of people that live in a country or area.
Climate	The general weather conditions of an area
Landmarks	A building or feature which is easily recognised.
Coastal	An area of land close to the sea



Indigenous Australians have the longest surviving cultural history on Earth. It is between 50,000 and 60,000 years old.

<http://www.aboriginalculture.com.au/>

Explore this website, remembering to be safe online, Find out 3 facts about Native Australians who have lived in this amazing land as far back as 40,000 BC!

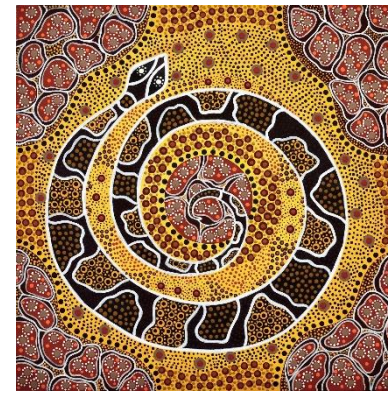


This is Barbara Weir ~ She was a famous Australian artist from the Lost Generation



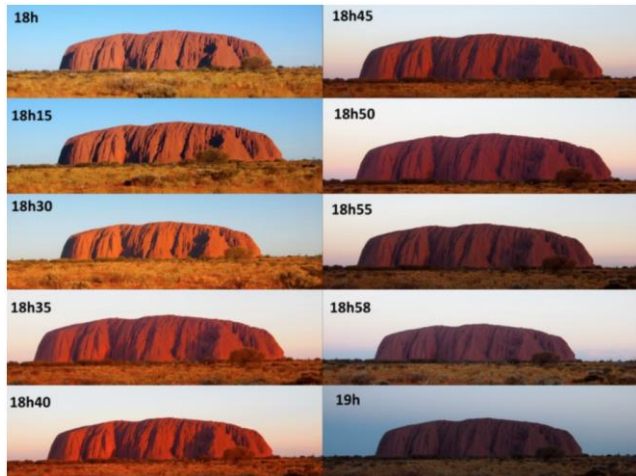
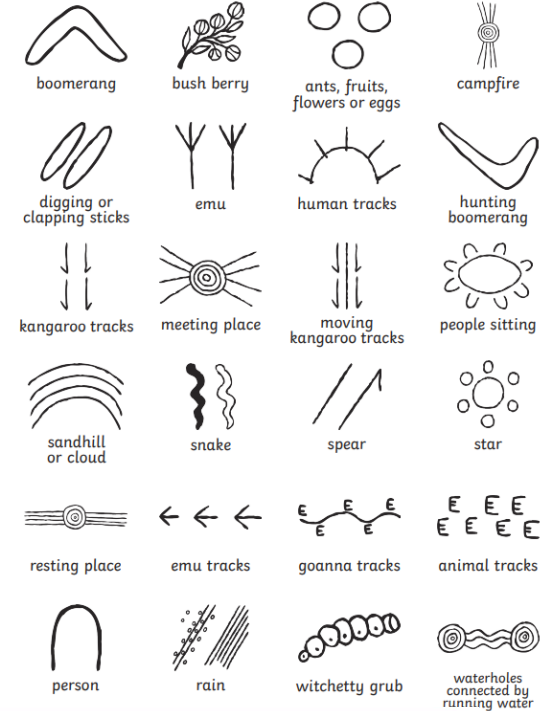
More than 1/3 of Australia is desert.

The Great Barrier Reef is the largest coral reef in the world.



The Dreamtime is the name for the spiritual beliefs and creation stories which have been told and passed down by Native Australians.

Aboriginal Symbols Key



Australian animals are amazing too! Do you recognise any?

- Can you name them?
- How would you describe their features?
- What are their basic needs?
- How could you group them?
- What is their habitat like?
- How are they adapted to their habitat?



There are Australian animals in the UK! Outback Trail - at All things Wild!



Did you know?.....